

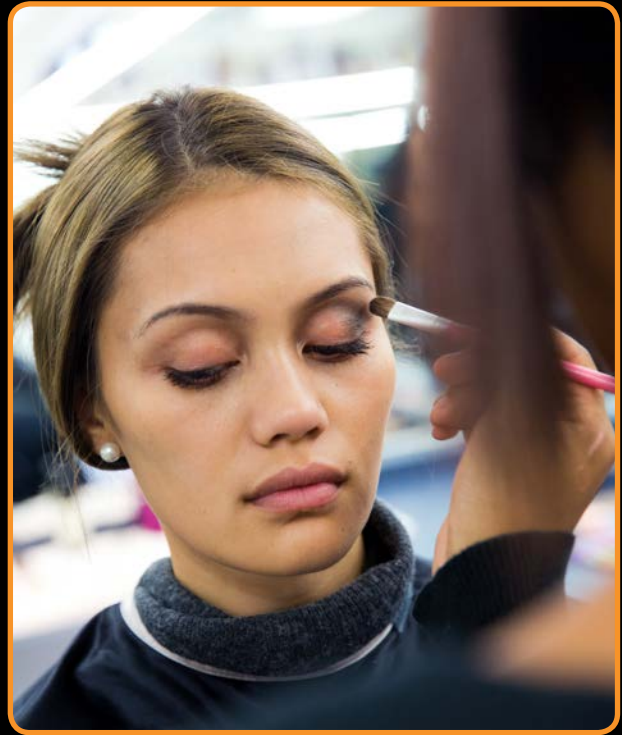


Gateway Programmes

The Gateway program opens new pathways from high school to tertiary study and workplace learning. It is a great opportunity for students to experience workplace learning and tertiary study prior to making decisions about their career path.

Makeup
Hairdressing
Barbering

2019



Makeup

26688

Level 1 Credits 4

Demonstrate knowledge and techniques of make-up application for a performance context

27701

Level 2 Credits 4

Demonstrate knowledge and skills of makeup design and application for a specified character

1307 Level 3 Credits 3

Speak to a known audience in a predictable situation

DAY 1	am	Introduction to skin care / skin consultation Tutor demonstration - day makeup Introduction to body painting Cultural and tribal makeup demonstration
	pm	Class practical
DAY 2	am	Research assignment Tutor demonstration - stage character makeup
	pm	Class practical
DAY 3	am	Tutor demonstration - brush techniques and contouring Tutor demonstration - stage character makeup Class assessment - models
	pm	Class practical
DAY 4	am	Research assignment Face charts for a specified character Tutor demonstration - brush techniques and contouring
	pm	Makeup application for a specified character Class practical
DAY 5	am	Prepare for your 5 minutes presentation Practice presentation skills
	pm	Share and learn from each other's presentations Certificates presented to all students that have achieved the programme requirements



Hairdressing

28843 Level 3 Credits 2

Demonstrate knowledge of personal health and hygiene, and self-styling, for working in a salon

25790 Level 3 Credits 4

Select, maintain, and demonstrate safe handling of hairdressing equipment and hand-held tools

1307 Level 3 Credits 3

Speak to a known audience in a predictable situation

DAY 1	am	Introduction to tools of trade and manikin care Introduction to personal health and hygiene, self-styling, and working in a salon Class discussion, assignment explained
	pm	Tutor demonstration of creative hairdressing techniques - knotting, weaving, textures Creative hair
DAY 2	am	Introduction to temporary hair colour, creating stencils, be as creative as you want Shampoo practical Elementary blow waving techniques
	pm	Re-cap last session Personal health and hygiene, self-styling for a salon environment, and working in a salon Continue with assignment
DAY 3	am	Introduction to heated appliances Tutor demonstration - french roll and petals
	pm	Class practical Re-cap the tools of the trade and how to maintain them Group Assignment
DAY 4	am	Introduction to braiding techniques - inside, outside, fishtail Tutor demonstration
	pm	Class practical
DAY 5	am	Prepare for your 5 minutes presentation Practice presentation skills
	pm	Share and learn from each other's presentations Certificates presented to all students that have achieved the programme requirements



Barbering

19808 Level 2 Credits 4

Select and maintain barbering tools and equipment

28018 Level 3 Credits 4

Demonstrate knowledge of removing product build up in the hair

1307 Level 3 Credits 3

Speak to a known audience in a predictable situation

DAY 1	am	Introduction to barbering equipment How to use barbering tools What they are used for and the maintenance of equipment Tutor demonstration
	pm	A simulated wet shave Product knowledge - cut throat razor, shaving crème
DAY 2	am	How to use the latest products Recommending the right product for the correct style Tutor demonstration - cut throat razor shave
	pm	Tutor demonstration - product build up removal Shampoo and blow wave techniques, men's styling Class practical
DAY 3	am	Introduction to massage techniques Class practical
	pm	Tools of trade research
DAY 4	am	Tutor demonstration - clipper cutting
	pm	Product removal assignment Introduction to presentation techniques
DAY 5	am	Presentation skills
	pm	Individual presentations

cut above academy

Cut Above Academy is part of the New Zealand School of Tourism group. When you enrol with Cut Above Academy, your enrolment is with New Zealand School of Tourism Limited.

City Campus Ground Level, 360 Queen Street
(entry through Wakefield St) Auckland Central

South Campus 5a Ryan Place Manukau City

Contact Pauline Pua at pauline@cutabove.co.nz

or call (09) 303 0181